



## **HISTORICAL OUTLINE AND DENDROLOGICAL ANALYSIS OF PARK AND CASTLE COMPLEX IN KRUPE (KRASNYSTAW DISTRICT)**

**Marek Dąbski, Margot Dudkiewicz, Wojciech Durlak, Magdalena Jusiak**  
*University of Life Sciences in Lublin*

### **Summary**

The paper reports the first stage of works on revalorisation of the surroundings of castle ruins in Krupie situated in the Krasnystaw district, Lubelskie voivodship. In 2012-2014 desk studies were conducted involving historical analysis of the place and analysis of spatial transformations of the object, as well as fieldworks comprising a detailed dendrological inventory of the terrain. A pond adjoins the castle on its north side, which makes the place greatly charming. The ruins are surrounded by a park from the turn of the 18<sup>th</sup> and 19<sup>th</sup> century. Tree species most numerous in this area comprise: *Aesculus hippocastanum*, *Robinia pseudoacacia*, *Malus sylvestris* and *Pyrus pyraeaster*.

**Key words:** Krupie, Krasnystaw district, castle, dendroflora

### **INTRODUCTION**

Ruins of the castle in Krupie are situated by picturesque backwaters of the Wieprz River tributaries, 6 km north of Krasnystaw town. Agricultural areas prevail in the neighbourhood, whereas unusually diverse fauna and flora, as well as clean air and nearby forest areas encourage tourists. In its heyday in the 16<sup>th</sup> and 17<sup>th</sup> century the castle used to be a very well-fortified stronghold.

Presented work aimed at presenting a historical analysis and conducting dendrological inventory of the object.

## **METHODS**

The history of the village of Krupe and the castle was presented on the basis of source materials available from the 19<sup>th</sup> century subject literature and the resources of the Provincial Heritage Monuments Protection Office in Lublin, Chełm Branch. The desk studies involved seeking information about the history of the castle complex. General state of the park and its dendroflora was developed on the basis of conducted dendrological inventory. All trees and bushes taxa were determined, the trunk circumferences were measured at the height of 1.30m above ground, as well as the diameter of crowns and tree heights. The names of tree species were used after Seneta and Dolatowski (2008). Photographic documentation was made including the remarks about the health state of the park tree stands. The trees were marked on inventory plan in 1:500 scale.

## **RESULTS**

### **Historical outline**

The Krupski family (Korczak coat of arms) built their first family residence in the 15<sup>th</sup> century. About 1492 Jerzy Krupski started construction of a small castle, but unfortunately the description of this stronghold was not saved until our times. Jerzy Krupski was a district governor of Chełm county and Bełz voivodship. He was regarded as the most entrepreneurial nobleman in the Chełm region, therefore he was commissioned to conduct construction works at royal castles build in this area. The castle and village of Krupe were first mentioned in documents of 1523 (Kromer 1611).

The next owner of the village of Krupe was Samuel Zborowski (Jastrzębiec coat of arms), a nobleman well known in the history of Poland, who under the rule of King Stephen Batory remained in constant conflict with his neighbour, a famous commander, chancellor Jan Zamojski. To spite Zamojski he constructed a large fortified castle in the village, with which few could compare in Poland at that time (Baliński and Lipiński 1885). At that time the castle had four towers ornamented with Jastrzębiec coat of arms and a gate tower. A moat, backwater and a drawbridge barred the way to the castle.

Samuel Zborowski was outlawed for murdering another nobleman Andrzej Wapowski and fled from Poland. After his return to the country he was beheaded in 1584 in Krakow, whereas his property and the castle were inherited by his daughter Kunegunda, the wife to Heronim Gnoiński.

By the end of the 16<sup>th</sup> century the owner of the castle was Paweł Orzechowski (Rogala coat of arms) chamberlain of Chełm. In 1604-1608 on the fundamentals of the old castle he constructed an imposing residence surrounded by a moat and pond.

The construction of the castle may be divided into three stages. At the first, north-eastern residential wing was built, a building by the western section of the wall and then a pentagonal bastion in the north-western corner and symmetrically another tower in the north-eastern corner. Both bastions were three-storey high. At the second stage of its construction the castle received rich ornaments which emphasized the representative character of the whole building; these included arcade gallery, ornamental stoves and chimneys in the castle interiors. At that time the castle was composed of a two-winged residential building, two towers and defence walls. The third stage of the castle extension again aimed at strengthening the defensive character of the site. It was necessary due to increasingly dangerous Tartar invasions on the eastern voivodships of Poland. At that time the eastern tower was demolished and curtain wall was constructed. The castle plan was four times larger than the previous one and divided into two parts. The first part was castle grounds and the second the residence itself, which was separated from the castle grounds by a single wall (Sypkowie 2009).

Since 1644, the owners of the castle were changing frequently. The days of its splendour ended in 1648 during the Chmielnicki's uprising when the castle was conquered and pilfered by the Cossack army. The subsequent owner of the property was Samuel Gnoiński, who during the Swedish invasion supported king Charles Gustav and defended the Krupe stronghold against the siege of Polish army in 1656. At that time the stronghold was conquered and again severely damaged.

Its next owners – the Rey family (descendants of Mikołaj Rey) reconstructed the ruined building in 1670. In the next years the castle changed its owners several times. It belonged to the Niemirycz, Buczacki and again to the Rey family, who in 1780 constructed a baroque and classicist manor house (existing to this day at the foot of the hill) and set up a landscape park surrounding the castle ruins (Sypkowie 2009). In 1885 Baliński and Lipiński reported that the castle was inhabited until quite recently – “Still the whole walls are standing, even cornices survived on two sides, whereas of all towers only one remained, traces of three are still visible”.

According to Sulimierski et al. (1885) in 1827 the village of Krupe had 20 houses and 137 inhabitants. The Krupe property (5 413 acres, i.e. 3 301 hectares) consisted of Krupe, Ostrów and Bzite granges and villages of Krupe, Krupice, Bzite, Wincentów and Oleśnica. The largest Krupe grange had the area of 3 269 acres, i.e., 1 830 ha, of which ploughlands and gardens covered 765 acres, meadows 256 acres, pastures 36 acres, waters 49 acres, forests 2142 acres and wastelands and other grounds 21 acres. At that time there were 4 brick buildings and 20 wooden ones. A rich village possessed a water mill, smokehouse, deposits of limestone and building stone. An orthodox church for the Ruthenian population also existed in the village. Sulimierski (1885) wrote: “In the forest adjoining the village, among numerous graves, there is a stone pyramid standing on a 200

feet-high hill. 108 feet high (the pyramid itself is 72 feet high), with a base measuring 324 square cubits. The purpose of this monuments, regarded as the Arian grave is unknown and difficult to guess". The drawing and description of the building appeared in *Illustrated weekly* of 1869. Similarly, Baliński and Lipiński (1885) write: "Immediately behind the picturesque castle ruins on a steep, terraced mountain, covered by a dense forest, there is a strange ancient monument like a two-storey house, nobody knows for whom erected. From its bottom it is a quadrangular brick construction, like a tower with a semicircle entrance door, topped off with a very steeple pyramid, whose top is made of ashlar. The local people call it an Arian grave, perhaps of one of the Rey or Orzechowski family." Also Gloger (1903) gives information about this characteristic object: "So called *Grobisko* in Krupie is of unknown and mysterious origin. It may be supposed that it is a grave constructed for some noble person, probably for one of the Orzechowski family who was of Arian faith in the 16<sup>th</sup> and 17<sup>th</sup> century". The last owner of the property was Roman Okulicz-Kozaryn. The property was further devastated during the first and second world wars and afterwards, in 1944 the ruins were taken over by the state.

### Existing state

At present the area of the castle complex is 2.2 ha. A pond is situated on the western part of the ruins and a manor house to the north. The access to the property is from the east by a 5m-wide gravel road leading to the car park. An access road to the adjoining farms is running from the car park towards south. No regular alleyways or paths remained in the area surrounding the park. A bike lane is running beside the ruins, it is a part of a tourist route called "Arian" from Rejowiec in Krasnystaw district to Surhów in Kraśniczyn district.

Large pieces of ruins of a castle constructed from lime bedrock and brick remained until this day. The bedrock is white and grey with a local reddish colouring. There are traces of wooden ceilings over the ground and first floor of the palace visible in the walls and in the bastions. Formerly the castle was covered by a plumped roof, i.e. the one whose slopes were inclined towards the building interior. The floors were made of square, red, ceramic tiles (Kurzątkowski 1962). Present external walls were preserved in about 40% (Photo 1, 2, 3 and 4). The inner and partition walls are missing, there are no roofs and the castle cellars are full of rubble. The remains of the building are exposed to unfavourable atmospheric conditions so their decay progresses from year to year. The ruined walls are additionally devastated by contemporary graffiti. The best preserved is the west fragment of the castle from the side of the pond. Only several chestnut trees remained from the chestnut alley running from the Krasnystaw-Chełm road to the manor house. The pond from the east is overgrown and drying up and only several apple and pear trees remained after the former orchard.



**Photo 1.** View of Krupce castle from the north-east (Author M. Jusiak 2013)



**Photo 2.** View of the ruins from the south (Author M. Jusiak, 2013)



**Photo 3 and 4 .** Views of the castle ruins (Author M. Jusiak,2013)

### Dendrological inventory

Dendrological inventory was performed for the portion of land under development, that is for the castle hill, with ancient ruins and his inner circle, which has the highest natural and cultural value. During fieldworks conducted in 2012-2013, listed were 146 trees (Table.1). Common horse chestnuts (*Aesculus hippocastanum*) and black locusts (*Robinia pseudoacacia*) are prevailing. Fruit orchard remnants are to be found in the north-western part of the area. Five groups of European cornel (*Cornus mas*) were found in the underbrush.

### Scenic analysis

Scenic analysis of the presented area aimed to identify the most attractive beauty spots (Fig.1). Four view axes were determined from the first point in the

car park. The first is oriented towards the eastern part of the terrain towards the overgrown water reservoir, the other towards a gravel alleyway, the third towards ruins and the last towards a park in the northern part of the area. The second scenic spot is on a scarp near the ruins and also four view axes are leading from it. The first leads towards the water reservoir, the second to the car park and the other two towards the park. The third beauty spot is a place within the inner walls of the castle. View axes from this position are oriented towards the pond adjoining the property from the west and towards the surrounding landscape.

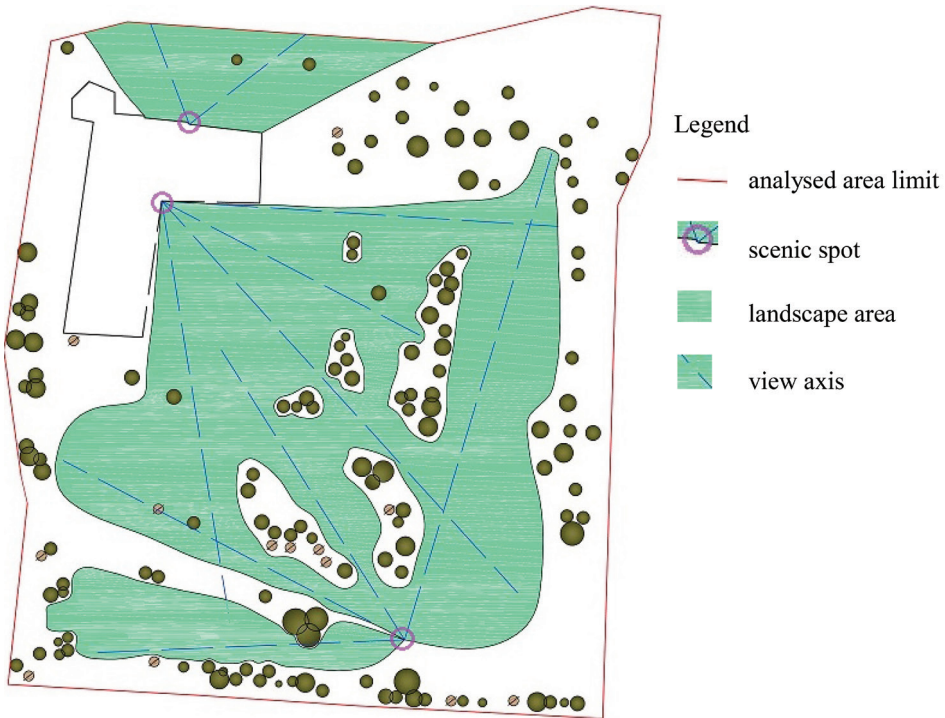
**Table 1.** List of trees in the park of the Krupe castle complex

No.	Latin name	Number of specimens	Stem circumference at the height of 130 cm above ground [cm]	Height [m]
1	<i>Acer platanoides</i> L.	2	20-25	4-5
3	<i>Aesculus hippocastanum</i> L.	15	38-66	10-12,5
3	<i>Malus sylvestris</i>	24	20-35	2,5-3
4	<i>Morus alba</i>	1	45	7,5
5	<i>Pyrus pyraster</i>	14	25-38	3-3,5
6	<i>Robinia pseudoacacia</i> L.	85	25-75	20-25
7	<i>Salix ×sepulcralis</i> ‘Chrysocoma’	5	29-45	10-13
<b>Total:</b>		146		

### Protection state

The park and castle complex in Krupe, included in the register of the Lubelskie voivodship historical monument register is composed of the castle ruins from the 16-18<sup>th</sup> century, earthen and brick fortifications from the 16<sup>th</sup>-17<sup>th</sup> century, manor house from 1840, gateway from the turn of the 18<sup>th</sup> and 19<sup>th</sup> century, park also from the turn of the 18<sup>th</sup> and 19<sup>th</sup> century and coach house from the 19<sup>th</sup> century. The last recommendations, recorded in 1962 were as follows: „3 main conservator’s proposals: 1. Protection of the object against further decay to preserve its historical substance; 2. Opening the complex to visitors for didactic purposes; 3. Development of the property for the needs of tourists, ensuring its constant care and protection” (Gawarecki 1962).

Further guidelines were recorded in 1979, including among others extending the conservation works to include the pond situated on the western part of the castle, whereas any constructions built on the adjoining building plots may be only two storeys high. However, due to a lack of investors, since that time until today, the ruins and their surroundings were left neglected and no changes have been made in this area. Currently the castle and surrounding area are the property of Krasnystaw district (Sola 1979).



**Figure 1.** Scenic analysis (Jusiak 2013)

## CONCLUSION

The castle ruins with the surrounding area are extremely interesting and beautiful place. The object has a rich history and cultural past. Conducted analysed revealed extraordinary attractiveness of this place. The ruins may prove a place where the teachers from the nearby schools may teach interesting history lessons.

In 2013 the ruins with the surrounding terrains were not adjusted to tourist needs. Conservation works are necessary to prevent further decay of the castle walls. At present the castle interior is completely ruined, whereas its northern part is best preserved. It is recommended to delineate and make hard surfaced alleyways, replace broken elements of small architecture and adjust them for the visitors' needs. A proposal has been made to construct an observation deck on the western part with a view over the pond and another observation deck inside the castle walls. Due to poor health or dangerously disturbed trunk equilibrium, 17 trees were indicated for removal. The other trees require treatment, particu-

larly in the upper parts of their crowns, e.g. by removing the excess of dried branches. Management of the area around the ruins will make the village and neighbouring landscape far more attractive and will attract tourists and visitors to this part of the region.

## REFERENCES

- Baliński M., Lipiński T., (1885) *Starożytna Polska pod względem historycznym, geograficznym i statystycznym*. Tom II, zeszyt 6. Warszawa, Druk S. Orgelbranda Synów.
- Gawarecki H. (10.11.1962) Odpis: Prezydium Wojewódzkiej Rady Narodowej w Lublinie, Wydział Kultury Wojewódzki Konserwator Zabytków, Główny Konserwator Zabytków.
- Gloger Z., (1903) *Encyklopedia staropolska ilustrowana*. Tom IV, druk P. Laskauer, Warszawa.
- Kromer M., (1611) *Kronika polska Marcina Kromera biskupa warmińskiego ksiąg XXX dotąd w trzech językach, a mianowicie w łacińskim, polskim i niemieckim wydana, na język polski z łacińskiego przełożona przez Marcina z Błażowa Błażowskiego i wydana w Krakowie w drukarni M. Loba*.
- Kurzątkowski M., (1962) Dokumentacja historyczna. P.P. Pracownie Konserwacji Zabytków, Pracowania Dokumentacji historycznej, Oddział Warszawa. Warszawa. *Rejestr zabytków województwa lubelskiego z dn. 31.12.2010 r.*
- Sola B., (1979) Inwentaryzacja. Katalog parków woj. chełmskiego, zleceńodawca: Urząd Wojewódzki w Chełmie. Wydział Kultury i Sztuki. Wojewódzki Konserwator Zabytków.
- Sulimierski F., Chlebowski B., Walewski W., (1883) *Słownik geograficzny Królestwa Polskiego i innych krajów słowiańskich* Tom IV. Druk „Wiek”, Warszawa.
- Sypkowie A. i R., (2009) *Zamki i warownie ziemi lubelskiej i Podlasia*. Wyd. Agencja Wydawnicza EGROS. Warszawa.

Marek Dąbski, Margot Dudkiewicz, Wojciech Durlak, Magdalena Jusiak  
Department of Ornamental Plants and Landscape Architecture  
Faculty of Horticulture and Landscape Architecture  
University of Life Sciences in Lublin  
ul. Głęboka 28, 20-612 Lublin  
e-mail:margotdudkiewicz@o2.pl

Received: 05.01.2015

Accepted: 14.05.2015