



EXCEEDANCE PROBABILITY OF SELECTED LOW CHARACTERISTIC FLOWS IN MOUNTAIN CATCHMENTS

Stanisław Węglarczyk
Cracow University of Technology

Summary

In Polish hydrology and water management the term *characteristic flow* exists denoting a specific value of flow at the given cross-section of a river calculated as the long-term minimum, mean, median or maximum calculated using the annual minimum, mean, median or maximum flow taken for each year from a series of (usually) daily flows. Some of these characteristic flows are used to define the low-flow (or drought) periods while the another criterion: a percentage flow Q_p taken from the long-term flow duration curve is also widely used.

In the paper the study on the frequency structure the empirical exceedance probability \hat{P} of a given characteristic flow made for some low and average characteristic flows (SNQ , WNQ , NSQ and SSQ) is presented. The results show that the exceedance probability of a given characteristic flow is variable, and the amount of this variability may be large, as is the case of WNQ and NSQ . So assigning a characteristic flow to a single FDC quantile value Q_p (as can be find in the literature) cannot be justified.

Correlation analysis made for the pairs (\hat{P} , characteristic flow), (\hat{P} , catchment area) and (\hat{P} , gauging station elevation) revealed some significant correlations. Only \hat{P} for SNQ is not correlated at all; correlation for other characteristic flows is statistically significant for at least one of the cases. The highest correlations (greater than 0.4 in absolute values) were found for the pairs (\hat{P} , gauging station elevation) for NSQ and, for SSQ , (\hat{P} , SSQ) and (\hat{P} , catchment area).

Key words: characteristic flows, flow duration curve, threshold value, SNQ , average annual minimum flow, WNQ , maximum annual minimum

flow, NSQ , minimum annual mean flow, SSQ , average annual mean flow, Upper Vistula river

INTRODUCTION

The term *characteristic flow* denotes in Polish hydrology and water management a specific value of flow at the given cross-section of a river calculated as the annual (summer, winter, etc.) minimum, mean, median or maximum flow taken for each year from a series of (usually) daily flows and denoted then NQ , SQ , ZQ or WQ , respectively. Such flows are also called characteristic flows of the first kind. By calculating minimum, mean, median or maximum from long-term series of NQ , SQ , ZQ or WQ the characteristic flows of the second kind are formed. Only some of the possible 16 characteristic flows of the second kind are of practical value, e.g., SNQ (mean annual minimum flow), WNQ (maximum annual minimum flow), SSQ (average annual mean flow), NWQ (minimum annual maximum flow), or SWQ (average annual maximum flow).

In defining low flow periods (or hydrological drought) a notion of threshold flow or threshold value is used and many different values of this criterion are applied. Often it is a value of a percentile Q_p read from the flow duration curve (FDC). The value of Q_p is exceeded $p\%$ of time of observation, usually 30 years or more. As such, the value of p may be interpreted as the average probability that a given (usually) daily flow is exceeded in an arbitrary year. The adopted value of p in Q_p as threshold value varies according to author and typical values are $p = 70\%$, 90% and 95% (Fleig 2004).

In Poland, apart from certain percentiles Q_p (e.g., $Q_{70\%}$; (Tokarczyk 2010)) which are also common, different characteristic flows are used as the threshold value. Lambor (1971) and Ozga-Zielińska and Brzeziński (1997) define the threshold value as WNQ (maximum annual minimum flow). Tokarczyk (2013) recognizes WNQ as „the most reasonable hydrological criterion”. Other authors (e.g., Stachý 1990, Farat *et al.* 1995; Mager *et al.* 2000, Tomaszewski 2007) suggest using SNQ (average annual minimum flow). Tomaszewski (2011) cites several papers where also another characteristic flow, ZNQ , i.e., median annual (or even monthly) minimum flow, is used as the threshold flow.

Unlike quantiles Q_p , all characteristic flows (excluding those whose first letter is Z , as in ZNQ) are not connected with their exceedance of nonexceedance frequency, so it would be interesting to study such connection. In the literature such information is rather scarce. For example, according to Tokarczyk (2010) $Q_{70\%}$ is approximately equal to SNQ , or (Tokarczyk 2008) that $Q_{70\%}$ lies in between WNQ and SNQ .

The aim of this paper is to study the distribution of exceedance frequency (empirical exceedance probability) of certain characteristic flows: SNQ , WNQ ,

NSQ and SSQ , i.e., the flows not greater than the long-term mean, using many long-term series of daily flows in the area of one catchment.

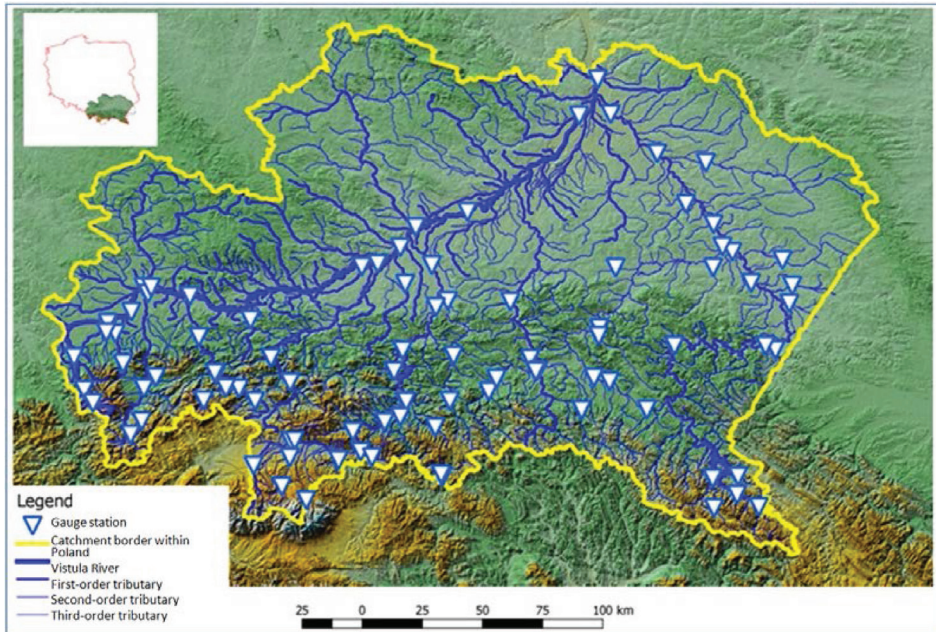


Figure 1. Location of gauging cross-sections in the Carpathian part of the Upper Vistula River basin.

MATERIALS AND METHODS

The area selected covers the Carpathian part of the Upper Vistula River basin (with the Vistula itself) and comprises 90 gauging stations with 30-year (1984-2013) daily flow time series (Figure 1). Each series comprises 10958 daily flows. The gauging cross-sections close catchments of various area ranging from 24.7 km² to 50,865 km² and the elevation of gauging stations varies from 133 m a.s.l. to 965.6 m a.s.l. The distribution of catchment areas and elevations of gauging stations are shown in Figure 2.

Most gauging station elevations (more than 50 out of 90) do not exceed 300 m a.s.l.; about half of the catchment areas are in between 100 and 1000 km².

In Figure 3 a typical flow magnitude in the catchments is presented in the form of the relationship between the average 1984-2013 flow and the catchment area, both in the linear and logarithmic (log-log) scales. As expected, high correlation can be seen in both plots. The correlation coefficient of log-values

is 97.3%, in linear scale it equals 99.0%. The plot in the linear scale suggests a slightly nonlinear relation between these variables; the log-log plot suggests it can be a power relationship.

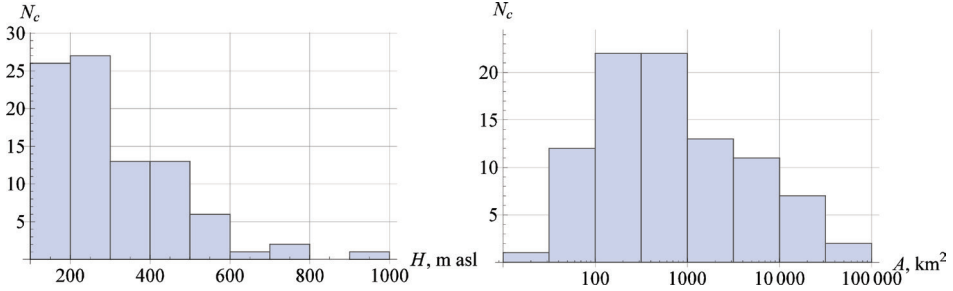


Figure 2. Distribution of number of catchments, N_c , versus gauging station elevation H and catchment area A .

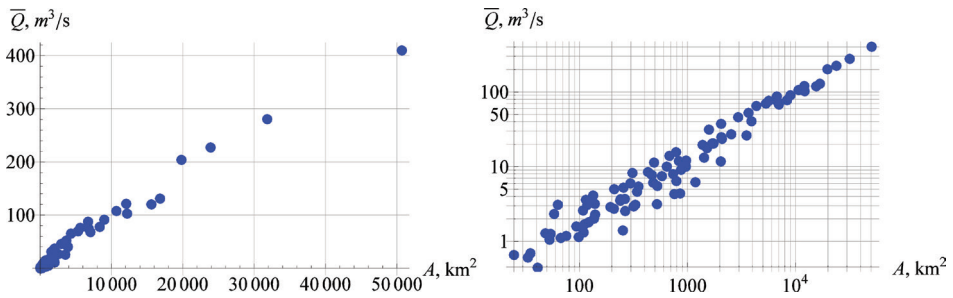


Figure 3. Scattergram of relationship between the average flow and catchment area in the Upper Vistula River catchment in the linear and logarithmic (log-log) scales.

Based on the long-term annual values of minimum flow and annual values of mean flow, four characteristic flows have been selected for each of 90 gauging station, as follows.

- (1) average annual minimum flow, SNQ

$$SNQ = \frac{1}{n} \sum_{i=1}^n (\min Q)_i \quad (1)$$

- (2) maximum annual minimum flow, WNQ

$$WNQ = \max_{i=1, \dots, n} (\min Q)_i \quad (2)$$

- (3) minimum annual mean flow, NSQ

$$NSQ = \min_{i=1, \dots, n} \bar{Q}_i \quad (3)$$

(4) average annual mean flow, SSQ

$$SSQ = \frac{1}{n} \sum_{i=1}^n \bar{Q}_i \quad (4)$$

Symbol n denotes the length of annual series ($n = 30$); $(\min Q)_i$ and \bar{Q}_i are minimum and mean flow for the i -th year, respectively.

To calculate empirical exceedance probability for given characteristic flow Q_{char} characteristic the following formula was used:

$$\hat{P}(Q \geq Q_{char}) = \frac{\#\{Q_i: Q_i \geq Q_{char}\}_{i=1, \dots, N}}{N} \quad (5)$$

where N is the number of days in the 30-year period ($N = 10958$) and Q_{char} is one of the characteristic flows SNQ , WNQ , NSQ and SSQ .

RESULTS AND DISCUSSION

For each of 90 gauging stations, based on 30-year series of daily flows, characteristic flows defined by equations (1)-(4) have been calculated and, using the period-of-record FDCs, empirical exceedance probability \hat{P} (5) has been assigned to each characteristic flow. The results are shown in Figure 4 and in Table 1.

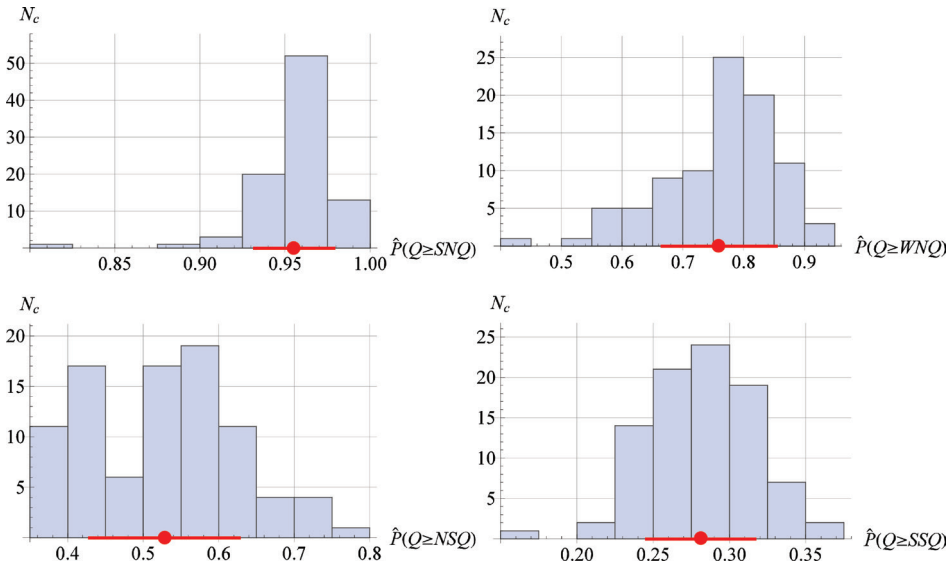


Figure 4. Frequency (expressed as the number of catchments, N_c) distribution of empirical exceedance probability \hat{P} , of the selected characteristic flows for the 90 gauging stations. Red point denotes the average exceedance probability, $\bar{\hat{P}}$, red line length is equal two standard deviations $s_{\hat{P}}$ of \hat{P} .

Distributions of empirical exceedance probabilities in Figure 4 are unimodal and regular for all characteristic flows with exception of the *NSQ* distributions which is clearly bimodal. The bimodality may suggest the existence of two subpopulations with significantly different properties. First two distributions shows clear negative asymmetry (see Table 1), the last (*SSQ*) is practically symmetrical although its skewness coefficient is slightly negative.

Average values of empirical exceedance probabilities shown in Table 1 allow to approximately assign a quantile Q_p to the characteristic flow: $Q_{95\%}$ to *SNQ*, $Q_{76\%}$ to *WNQ*, $Q_{53\%}$ to *NSQ*, and $Q_{28\%}$ to *SSQ*. This assignment, especially for mean flow *SSQ*, points to the high asymmetry of daily flows, which is characteristic for mountain catchments.

Table 1. Average \bar{P} standard deviation $s_{\hat{P}}$ and quartiles $\hat{P}_{25\%}$, $\hat{P}_{50\%}$ and $\hat{P}_{75\%}$ of empirical exceedance probability, \hat{P} , of the selected characteristic flows, and their equivalence in number of days per year. Symbol $cs_{\hat{P}}$ denotes the skewness of \hat{P} .

Statistic	Characteristic flow							
	<i>SNQ</i>		<i>WNQ</i>		<i>NSQ</i>		<i>SSQ</i>	
	%	days	%	days	%	days	%	days
\bar{P}	95,3%	348	76,0%	277	52,5%	192	28,0%	102
$s_{\hat{P}}$	2,4%	9	9,4%	34	9,8%	36	3,5%	13
$cs_{\hat{P}}$	-3,1441		-0,8663		0,1747		-0,1421	
$\hat{P}_{25\%}$	94,7%	346	70,5%	257	41,8%	153	25,4%	93
$\hat{P}_{50\%}$	95,4%	348	76,6%	280	53,6%	196	27,7%	101
$\hat{P}_{75\%}$	96,5%	352	82,7%	302	58,5%	214	30,5%	111

The variability of empirical exceedance probabilities, as shown in Table 1, exhibits expected regular behaviour of empirical exceedance probability, i.e., decreasing to the right of Table 1. Different situation is with the standard deviation. The variability of exceedance probabilities for *WNQ* and *NSQ* is quite considerable (more than month, if converted to days). This can be better seen in Figure 6, where all four distributions are sketched comparatively with all three quartiles drawn. The whole variability intervals of *WNQ* and *NSQ* largely overlap; this is to lesser extend true for *SNQ* and *WNQ*. *SSQ* is the only out of the four characteristic flows that practically does not overlap with any other.

It is interesting whether empirical exceedance probability of a characteristic flow is correlated with that flow and/or with the corresponding catchment area *A* and gauging station elevation *H*. The answer is partly yes, partly no. Table 2

shows that in the half of cases this correlation is statistically significant (p-value < 0.01). Exceedance probability \hat{P} of SNQ is not correlated at all, \hat{P} for NSQ is significantly correlated with all three variables, \hat{P} for WNQ is correlated with gauge elevation only, and \hat{P} for SSQ is correlated both with SSQ and catchment area.

Table 2. Correlation coefficients $\text{corr}()$ of empirical exceedance probability, \hat{P} , of the selected characteristic flows, Q_{char} , with Q_{char} , catchment area, A , and gauging station elevation H . The p-values are given for the two-sided test of the zero-correlation coefficient hypothesis.

	characteristic flow, Q_{char}			
	SNQ	WNQ	NSQ	SSQ
$\text{corr}(\hat{P}, Q_{char})$	0,049	-0,016	0,251	0,460
p-value	0,324	0,442	0,008	2,58E-06
$\text{corr}(\hat{P}, A)$	0,060	0,008	0,265	0,430
p-value	0,286	0,471	0,006	1,16E-05
$\text{corr}(\hat{P}, H)$	0,096	0,353	-0,415	0,055
p-value	0,183	0,0003	2,43E-05	0,3028

Statistically significant correlations are in most cases positive, which means, that, for example for SSQ , the larger catchment area the larger is the exceedance probability, i.e., the longer is the average duration per year of flows exceeding the SSQ value. Statistically significant correlation between \hat{P} and NSQ is negative: the higher is the gauging station the shorter is the number of days in a year with flow exceeding NSQ .

FINAL REMARKS AND CONCLUSIONS

The study on the frequency structure the empirical exceedance probability \hat{P} of a given characteristic flow made for some low and average characteristic flows (SNQ , WNQ , NSQ and SSQ) shows that the exceedance probability of a given characteristic flow is variable, and the amount of this variability may be large, as is the case of WNQ and NSQ . This finding shows that assigning a characteristic flow to a single FDC quantile value Q_p cannot be justified and, if used, additional relevant information on uncertainty should be given. The average value of \hat{P} for SSQ (28%), much less than 50%, shows high asymmetry of catchment flows distribution, which can be explained by the mountain character of most of the catchments.

Correlation analysis made for the pairs (\hat{P} , characteristic flow), (\hat{P} , catchment area) and (\hat{P} , gauging station elevation) revealed some significant correlations. Only \hat{P} for *SNQ* is not correlated at all; correlation for other characteristic flows is statistically significant for at least one of the cases. The highest correlations (greater than 0.4 in absolute values) were found for the pairs (\hat{P} , gauging station elevation) for *NSQ* and, for *SSQ*, (\hat{P} , *SSQ*) and (\hat{P} , catchment area).

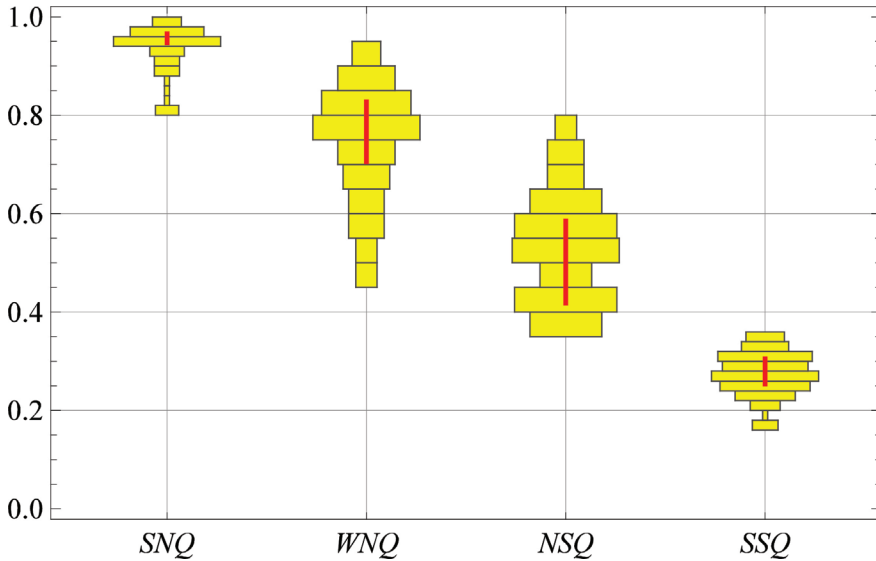


Figure 5. Frequency distribution of empirical exceedance probability, \hat{P} , of the selected characteristic flows for the 90 gauging stations. Red point denotes the median exceedance probability \hat{P} , red line length is equal to the interquartile distance of \hat{P} .

ACKNOWLEDGMENTS

The paper has been prepared within the research problem \acute{S} -1/378/2013/*DS* *The influence of anthropogenic factors on qualitative and quantitative properties of hydrological processes in the catchment, task 3: Analysis of low flow properties in the Carpathian area of the Upper Vistula River basin.* The data has been provided by the Institute of Meteorology and Water Management, National Research Institute.

REFERENCES

- Farat R., Kępińska-Kasprzak M., Kowalczyk P., Mager P. (1995). *Susze na obszarze Polski w latach 1951–1990 (Droughts on the area of Poland in the years 1951–1990)*. Materiały badawcze IMGW, Seria: Gospodarka Wodna i Ochrona Wód nr 16, s. 140.
- Fleig A. K. (2004). *Hydrological Drought – a comparative study using daily discharge series from around the world*. der Albert-Ludwigs-Universität Freiburg i. Br.. Diplomarbeit. Freiburg;
- Lambor J., 1971, *Hydrologia inżynierska*, Arkady, Warszawa.
- Mager P., Kuźnicka M., Kępińska-Kasprzak M., Farat R. (2000). *Changes in the intensity and frequency of occurrence of droughts in Poland (1891–1995)*, Geographica Polonica 73, 2: 41–47
- Ozga-Zielińska M., Brzeziński J. (1997). *Hydrologia stosowana*. Warszawa: Wydawnictwo Naukowe PWN, wyd.II, zmienione.
- Stachý J. (1990). Przepływ średni niski SNQ jako miarodajna charakterystyka projektowa. (Average annual minimum flow SNW as the reliable design characteristics) Przeg. Geof., XXXV(1-2), 45–54
- Tokarczyk T. (2008). *Wskaźniki oceny suszy stosowane w Polsce i na świecie (Indices for drought assessment used in the world and in Poland)*. Infrastruktura i Ekologia Terenów Wiejskich. Nr 7/2008. PAN. Oddział w Krakowie, 167-182;
- Tokarczyk T. (2010). *Niżówka jako wskaźnik suszy hydrologicznej (Low-flow period and an index of hydrological drought)*. IMGW, Warszawa;
- Tokarczyk T. (2013). *Classification of low flow and hydrological drought for a river basin*, Acta Geophysica 61(2), 404-421
- Tomaszewski E. (2007). *Hydrological Droughts in Central Poland – Temporal and Spatial Patterns*. Geographia Polonica, Vol. 80, No. 2: 117–124
- Tomaszewski E. (2011). Defining the threshold level of hydrological drought in lake catchments, Limnological Review 11(2), 81-88

Prof. dr hab. Stanisław Węglarczyk
Cracow University of Technology
Institute of Water Engineering and Water Management
ul. Warszawska 24
31-155 Kraków
e-mail: sweglarc@iigw.pl